

NEW BORA 2

# Iconic reliability



The Bora turbine has continued to reaffirm the quality of its engineering and its high level of reliability, both of which have remained exemplary. It is now Bien-Air's bestselling turbine. Because of the trust you have placed in it, we wanted to ensure that this legacy continues

S W I S S  M A D E

# IN 1991

an icon was born

BORA 2

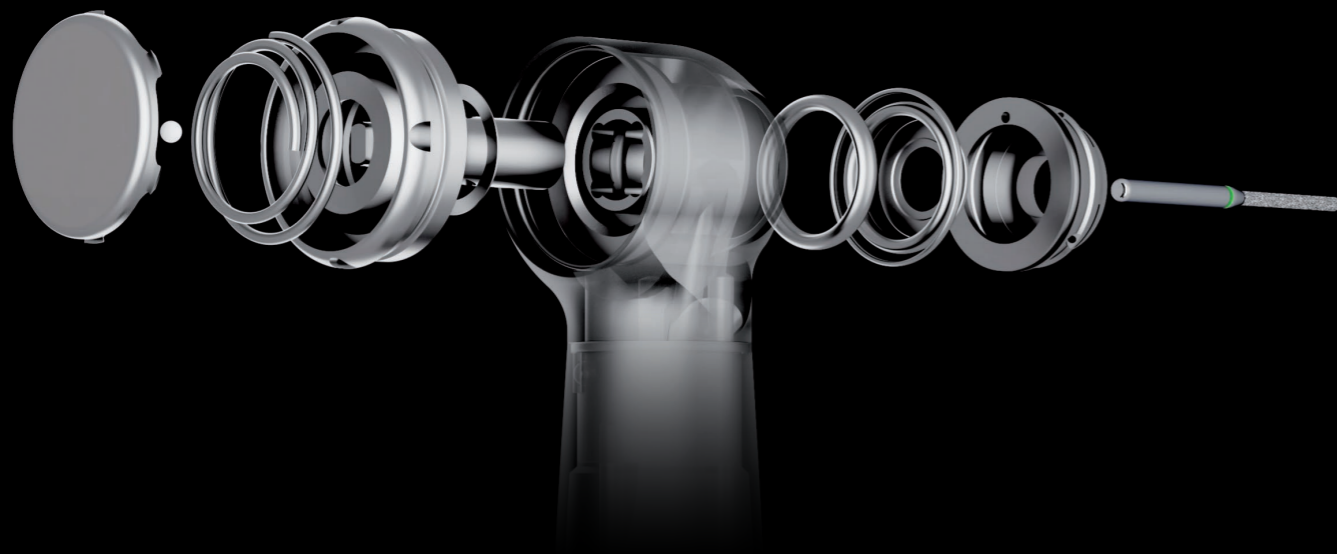
*From now on,  
the past speaks for itself;  
the future is guaranteed.*

The reliability and  
service life of the Bora  
turbine are self-evident.

The new design of the Bora 2 turbine  
provides even better performance,  
whilst retaining the legendary reliability  
which has characterised previous  
versions since 1991.

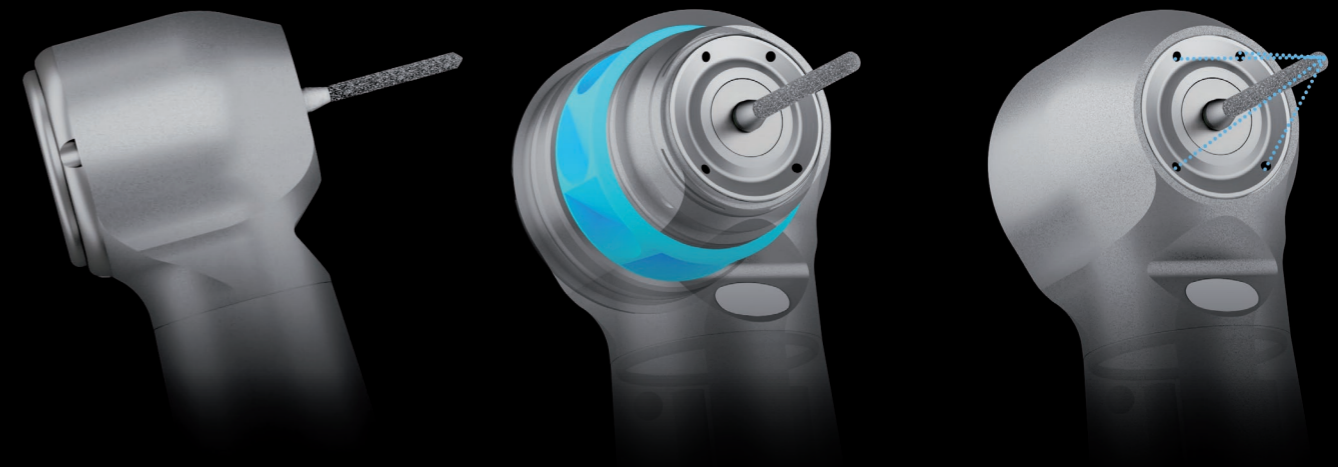


SWISS  MADE



### EXEMPLARY RELIABILITY AND ENHANCED PERFORMANCE.

The new design of the Bora 2 offers even better performance, whilst retaining the legendary reliability which has characterised previous versions since 1991.



### MORE ROBUST.

The head of the Bora 2 is made entirely from stainless steel. This increases its durability, making it more resistant to impacts.

### MORE POWERFUL.

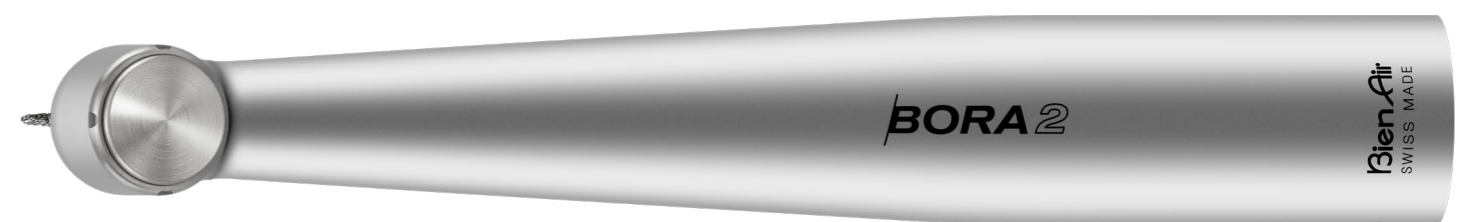
With a **20 %** increase in both power and torque, the Bora 2 allows you to cut **twice as fast**. Save precious time!

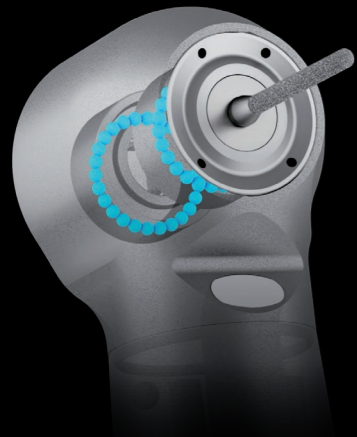
### NOTHING CAN HINDER YOU.

To ensure better irrigation of the area being treated, the **Accu-Spray Quattro Mix™** system has four asymmetrical air/water sprays which converge on the end of the bur, with laser precision. In combination with the LED lighting, perfect visibility of the oral cavity is guaranteed.

# NEW DESIGN.

SWISS  MADE





## EXTENDED SERVICE LIFE.

The optimised design of the rotor and the new ceramic ball bearings with enhanced wear-resistance guarantee an extended service life **35%** longer than the previous generation.



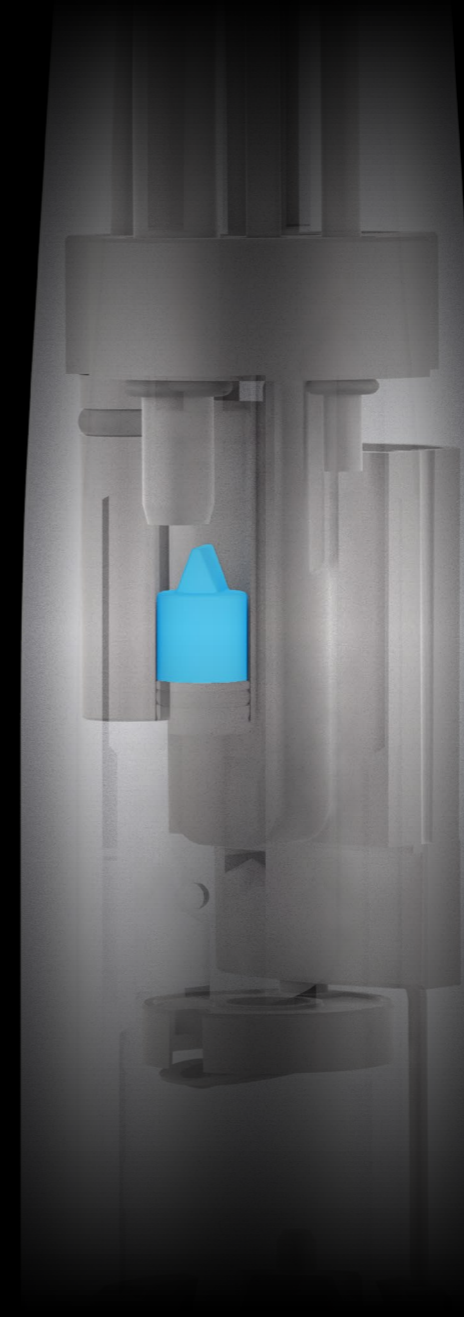
## INCREASED PRECISION.

The **Accu-Chuck PreciPlus** chuck design ensures the most secure clamping of the bur. Noise is significantly reduced, thereby lending the Bora 2 unequalled practitioner and patient comfort.



## MORE SAFETY.

Integrated into the push-button in the handpiece head, the patented **Cool Touch** heat-guard technology prevents a build-up of heat and reduces the risk of burns to your patients.



## REDUCED RISKS OF CROSS CONTAMINATION.

The only handpiece with an sterilizable **anti-retraction valve** is combined with the only coupling containing exhaust flow anti-retraction.

Studies have proven anti-retraction valves considerably reduce the flow of fluids from the oral cavity back into the dental unit's hoses. Alongside this, the protective **Sealed Head** mechanism reduces the aspiration of fluids into the instrument head.

# SMALLER IS BETTER.



## SMALLER HEAD.

Thanks to its smaller head, which is less than **12 mm** in diameter and just **13 mm** long, the Bora 2 increases your field of vision and allows better access to the back of the mouth, for enhanced comfort.

## BORA 2 LED

20 watts  
59 dBA  
Head size Ø 11.9mm 13.2mm  
4 asymmetrical mixed sprays  
anti-retraction valve  
LED Light  
2 years warranty

Bora 2 LED REF 1601152-001



## BORA 2 LK

20 watts  
59 dBA  
Head size Ø 11.9mm 13.2mm  
4 asymmetrical mixed sprays  
anti-retraction valve  
LED Light  
2 years warranty

Bora 2 LK REF 1601153-001



**WWW.BIENAIR.COM**

S W I S S  M A D E

Read more

