

# Geared Angle Handpieces

## Operation Manual

Model: CX235C1

CX235C4

This product is a dental endo motor accessories, used in dental treatment with endo motor handle connection, the root canal treatment for teeth.

Please read this Operation Manual carefully before use, and file for future reference.

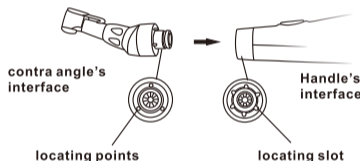
CE 0197

### Warning

- Read this Operation Manual before use to fully understand the product functions and file for future reference.
- When operating the product always consider the safety of the patient.
- Check for vibration, noise and overheating outside the patient's oral cavity before use. If any abnormalities are found, stop using the contra angle head immediately and contact dealer.
- Users are responsible for the operational control, maintenance and continual inspection of this product.
- Do not attempt to disassemble the contra angle head or tamper with the mechanism.
- Do not connect or disconnect the contra angle head or bur until the drive motor has completely stopped.
- Should the product function abnormally, cease operation immediately and contact your Dealer.
- Depressing the Push Button while the contra angle head is in operation may cause overheating, serious technical damage and possible premature contra angle head failure. During operation avoid contact with any oral tissue that may cause the Push Button to be depressed while the contra angle head is in operation.
- Do not use high acid water or sterilizing solutions to wipe, immerse or clean the product.
- The products are delivered in a non-sterile condition and must be sterilized prior to use.
- Perform regular function and maintenance checks.
- If the product is not used for a long period check it is functioning correctly before using on a patient.
- Don't immerse contra angle head in any chemical solvent or solution or by dry-heat disinfection. Sterilization by autoclave at (134°C&0.22MPa) is suggested.

## 1. Connecting/Disconnecting contra angle head and Motor

- 1) The contra angle head could be connected with the motor handpiece at 6 adjustable head positions. align the positioning pins of the contra angle head with the positioning slots of the motor handpiece and insert the head until they click
- 2) When removing the contra angle head, pull it out axial.



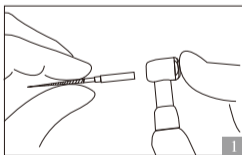
### Warning

- When attaching and detaching the he contra angle head, turn off the power beforehand.
- Check that the contra angle head is securely assembled to the motor handpiece.

## 2. Mounting and Removing file

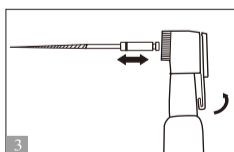
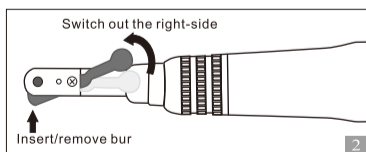
### 2.1 Push button:

- 1) Insert the file into the chuck until it stops.
- 2) Lightly turn the file until it engages with the latch mechanism. push it inward to click.
- 3) Removing the file: depress the push-button and pull out the file.(Fig. 1)



### 2.2 Latch Chuck:

- 1) Open the latch chuck to the right, insert the file.
- 2) Be sure the handle bur part of the file line the proper part in the cartridge then turn the latch chuck back. (Fig. 2/3)
- 3) When remove the file, open the latch chuck then take out the file.



### Caution:

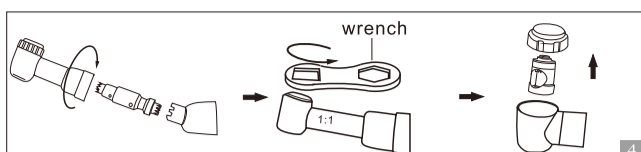
- Use the bur that meets the relevant standard diameter (CA Ø2.35mm).
- When mounting and removing the file, turn off the power beforehand.
- After the file is locked in place, lightly pull out the file to make sure the file is locked.
- Always clean the shank of the file to be installed allowing dirt to enter the chuck could cause loss of concentricity and deterioration of chucking force.

## 3. Replacing the Cartridge

### 3.1 Push Button:

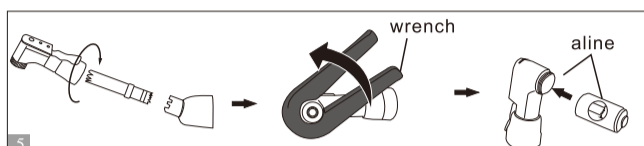
- 1) Loosen the coupling sleeve counterclockwise, remove the head and drive shaft.
- 2) Locate the correct wrench tool on the head cap then turn the wrench counterclockwise to loosen the cap, remove the cap.

- 3) Insert a new cartridge into the head.
- 4) Completely insert the cartridge until the cartridge end face aligns with the end face of the handpiece head. (Fig.4)
- 5) Tighten the head cover with the supplied wrench / screwdriver, and to assemble the parts.



### 3.2 Latch Chuck:

- 1) Loosen the coupling sleeve counterclockwise, remove the head and drive shaft.
- 2) Unscrew the head cover with the supplied wrench then turn the wrench counterclockwise to loosen the cover, remove the cover. Remove the cartridge.
- 3) Remove the head and drive shaft.
- 4) Insert a new cartridge into the head.
- 5) Completely insert the cartridge until the cartridge end face aligns with the end face of the handpiece head. (Fig.5)
- 6) Tighten the head cover with the supplied wrench / screwdriver, and to assemble the parts.



## 4. Maintenance


### ⚠ Caution:

After each use or before each calibration and autoclaving.

### 4.1 Cleaning

Scrub dirt and debris from the contra angle head, and wipe clean with alcohol-immersed cotton swab or cloth. Do not use a wire brush.

### 4.2 Sterilization

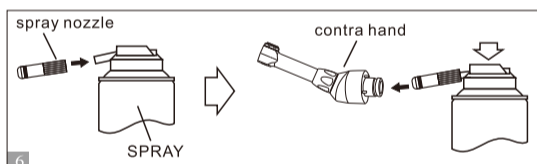
 The contra angle head can be autoclavable up to max.134°C.

### ⚠ Caution:

- Do not wash soak, or wipe off the handpiece within the oxidation potential solution (strong acid, super acid solution) or sterilized solution.
- Do not autoclave the equipment which with residual chemical it may cause a peel off the plating or exert a harmful influence to internal parts.
- Store it in a place where the handpiece is not subject to air with dust, sulfur or salinity.
- Don't touch the handpiece just after the autoclave, it is extremely hot.

### 4.3 Lubrication

- 1) Disconnect the handle from the motor.
- 2) Remove the bur from the handpiece
- 3) Mount the tip nozzle into the spray can port (Fig.6).
- 4) Insert the tip nozzle into the drive air port of the handpiece. Hold the handpiece and spray for approximately 2-3 seconds. Apply lubricant until it expels from the handpiece head for at least 2 seconds (Fig.6).



## 5. Transport and storage

Operating environment:

Ambient temperature: +5°C - +40°C  
Relative humidity: 20% - 80%RH  
Air pressure: 86kPa-106kPa

Transportation and storage conditions:

Ambient temperature: -10°C - +55°C  
Relative humidity: ≤93%RH  
Air pressure: 50kPa-106kPa

## 6. Standar Symbols

 Warning

 Caution

 Class II equipment

 Autoclave

 Manufacturer

 Type B applied part

 Refer to Instruction Manual/Booklet

 Certified to MDD93/42/EEC

 Authorized representative in the European Community

## Warranty

COXO grants the user a 12 months guarantee for its complete product range, except ball bearing (3 months guarantee) from the date of invoice issued Maintenance over the term of guarantee will be at the customer's charge. COXO will not be responsible for damage or injury resulting from.

- excessive use
- improper manipulation of the product, or modification to product carried out by persons not authorizes by COXO.
- fail to follow the instruction to install, operate and maintenance the handpiece.
- damage of chemical, electrical or electrolysis due to improper autoclaving and storing.
- improper working pressure.

The technical specifications and dimension in these instruction are given only as a guide. They may not be subject of any claim.



**Foshan COXO Medical Instrument Co.,Ltd**

BLDG 4, District A, Guangdong New Light Source Industrial Base, South of Luocun Avenue, Nanhai District, Foshan, 528226 Guangdong, China



**Lotus NL B.V.**

Koningin Julianaplein 10, 1e Verd, 2595AA, The Hague, Netherlands.  
E-mail: peter@lotusnl.com

Foshan COXO medical instrument Co.,Ltd  
TEL:0086-757-66692058  
FAX:0086-757-81800058  
E-mail: coxotec@163.com  
Http://www.coxotec.com

VER: 1.4  
REV: 2020-12-07