

SPOON EXCAVATORS



For the removal of softened carious dentin and temporary fillings.

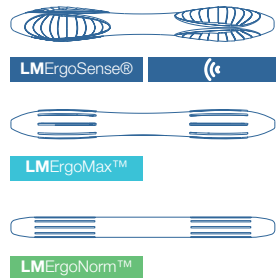


Design:

- Spoon-shaped working end
- Rounded tip
- Long cutting edge, which can easily treat broader areas



Handle options:



Spoon Excavator, 1.0 mm

- LMergoSense® LM 522-523 ES
- LM 522-523 EST
- LMergoMax™ LM 522-523 XSI
- LMergoNorm™ LM 522-523 SI

Spoon Excavator, 1.5 mm

- LMergoSense® LM 533-534 ES
- LM 533-534 EST
- LMergoMax™ LM 533-534 XSI
- LMergoNorm™ LM 533-534 SI



ROUND EXCAVATORS



Cariology:

- For the removal of softened, carious dentin
- For the removal of temporary fillings

Surgery:

- To sever the periodontal ligament prior to extraction
- For the removal of granulation tissue after extraction



Design:

- Round working end
- Curved cutting edge



Round Excavator, 1.0 mm

- LMergoSense® LM 61-62 ES
- LM 61-62 EST
- LMergoMax™ LM 61-62 XSI
- LMergoNorm™ LM 61-62 SI



Round Excavator, 1.5 mm

- LMergoSense® LM 63-64 ES
- LM 63-64 EST
- LMergoMax™ LM 63-64 XSI
- LMergoNorm™ LM 63-64 SI



Round Excavator, 2.0 mm

- LMergoSense® LM 65-66 ES
- LM 65-66 EST
- LMergoMax™ LM 65-66 XSI
- LMergoNorm™ LM 65-66 SI

TRIPLE-ANGLED BACK ACTION EXCAVATORS



Cariology:

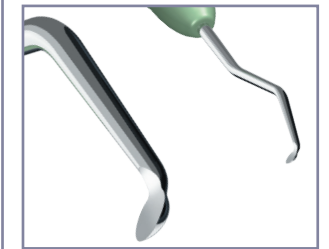
- For removing carious dentin
- For undermining enamel during tissue-saving preparations
- For the horizontal finishing of outer cavity margins

Periodontics:

- For the removal of calculus from hard to reach areas such as the lower anterior lingual surfaces
- For the depuration of concave root grooves and furcations

Surgery:

- For the removal of granulation tissue in connection with apical resections, flap operations, or extractions



Design:

- Round working end and curved cutting edge
- Shank angulations ease treatments on hard to reach buccal, distal, and lingual surfaces



The blade shank is triple-angled, allowing for "back action" functions

Triple-angled Back Action Excavator, 1.0 mm

- LMErgoSense®** LM 611-621 ES
- LM 611-621 EST**
- LMErgoMax™** LM 611-621 XSI
- LMErgoNorm™** LM 611-621 SI



Triple-angled Back Action Excavator, 1.5 mm

- LMErgoSense®** LM 634-641 ES
- LM 631-641 EST**
- LMErgoMax™** LM 631-641 XSI
- LMErgoNorm™** LM 631-641 SI



Triple-angled Back Action Excavator, 2.0 mm

- LMErgoSense®** LM 651-661 ES
- LM 651-661 EST**
- LMErgoMax™** LM 651-661 XSI
- LMErgoNorm™** LM 651-661 SI



Triple-angled Back Action Excavator, 3.5 mm

- LMErgoSense®** LM 671-681 ES
- LM 671-681 EST**
- LMErgoMax™** LM 671-681 XSI
- LMErgoNorm™** LM 671-681 SI

- For the horizontal finishing of outer cavity margins

GINGIVAL MARGIN TRIMMERS



For finishing enamel margins in the proximal area as well as for making plastic, amalgam and ceramic fillings.



Gingival Margin Trimmer, 1.2 mm, distal

- LMErgoSense®** LM 121-122 ES
- LM 121-122 EST**
- LMErgoMax™** LM 121-122 XSI
- LMErgoNorm™** LM 121-122 SI



Gingival Margin Trimmer, 1.2 mm, mesial

- LMErgoSense®** LM 125-126 ES
- LM 125-126 EST**
- LMErgoMax™** LM 125-126 XSI
- LMErgoNorm™** LM 125-126 SI

SPATULA



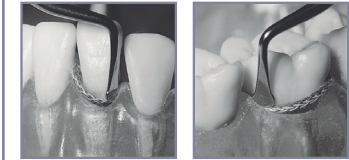
Spatula

- LMErgoSense®** LM 450-490 ES
- LM 450-460 EST**
- LMErgoMax™** LM 450-460 XSI
- LMErgoNorm™** LM 450-460 SI

CORD PACKERS



For packing retraction cord into the gingival pocket.



The bent blade enables getting around the tooth as well as the packing of the cord using vertical motions.



Cord Packer, 2.0 mm

- LMErgoSense®** LM 490-491 ES
- LM 490-491 EST**
- LMErgoMax™** LM 490-491 XSI
- LMErgoNorm™** LM 490-491 SI



Cord Packer, 2.6 mm

- LMErgoSense®** LM 492-493 ES
- LM 492-493 EST**
- LMErgoMax™** LM 492-493 XSI
- LMErgoNorm™** LM 492-493 SI

BASE CARRIERS

For carrying base or thin liner to dentin surfaces.



Base Carrier, rigid

- LMErgoSense®** LM 29H-30H ES
- ☾** LM 29H-30H EST
- LMErgoMax™** LM 29H-30H XSI
- LMErgoNorm™** LM 29H-30H SI



Base Carrier - Condenser, malleable tip

- LMErgoSense®** LM 30-34 ES
- ☾** LM 30-34 EST
- LMErgoMax™** LM 30-34 XSI
- LMErgoNorm™** LM 30-34 SI

- Tip (30) can be bent into the desired form, allowing for easier access to hard to reach areas



Base Carrier - Condenser, rigid

- LMErgoSense®** LM 30H-34 ES
- ☾** LM 30H-34 EST
- LMErgoMax™** LM 30H-34 XSI
- LMErgoNorm™** LM 30H-34 SI

PLUGGERS

For packing all types of filling materials.



Plugger, cylindrical, 1.0-1.5 mm

- LMErgoSense®** LM 340-360 ES
- ☾** LM 340-360 EST
- LMErgoMax™** LM 340-360 XSI
- LMErgoNorm™** LM 340-360 SI



Plugger, cylindrical, 1.2-2.0 mm

- LMErgoSense®** LM 350-380 ES
- ☾** LM 350-380 EST
- LMErgoMax™** LM 350-380 XSI
- LMErgoNorm™** LM 350-380 SI



Plugger, cylindrical, 1.8-2.5 mm

- LMErgoSense®** LM 370-390 ES
- ☾** LM 370-390 EST
- LMErgoMax™** LM 370-390 XSI
- LMErgoNorm™** LM 370-390 SI

BURNISHERS

For burnishing, modelling and finishing of fillings.



Burnisher

- LMErgoSense®** LM 31-32 ES
- ☾** LM 31-32 EST
- LMErgoMax™** LM 31-32 XSI
- LMErgoNorm™** LM 31-32 SI

- For burnishing fillings at cavity margins
- For packing and shaping of composite fillings
- For packing of inlay/onlay fillings



Burnisher - Plugger, ball-ended, 1.5-2.5 mm

- LMErgoSense®** LM 471-473 ES
- ☾** LM 471-473 EST
- LMErgoMax™** LM 471-473 XSI
- LMErgoNorm™** LM 471-473 SI

- For plugging filling into cavity
- For polishing
- For plugging and shaping of composite fillings



Burnisher 27-29

- LMErgoSense®** LM 476-477 ES
- ☾** LM 476-477 EST
- LMErgoMax™** LM 476-477 XSI
- LMErgoNorm™** LM 476-477 SI

- For shaping of occlusal surfaces
- For burnishing of fillings at cavity margins



Burnisher 21

- LMErgoSense®** LM 372-373 ES
- ☾** LM 372-373 EST
- LMErgoMax™** LM 372-373 XSI
- LMErgoNorm™** LM 372-373 SI

- For shaping and packing of composite fillings
- For shaping of occlusal surfaces before hardening
- Pits, grooves, lateral ridges

INSTRUMENTS FOR AESTHETIC RESTORATIONS

MD CE



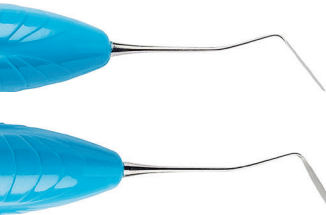
STYLEITALIANO
SHADE GUIDES

LM-Arte™ is a set of innovative instruments for aesthetic restorations and designed especially for composite layering. Each instrument is color-coded and named by its main function to enable easy, efficient and quick restorative treatments.

LM-Arte™ instruments have been developed in co-operation with Style Italiano, a study group of passionate clinicians and researchers specialized in aesthetic restorative dentistry.

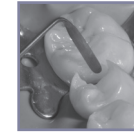


Founders of Style Italiano, Walter Devoto DDS and Angelo Putignano MD, DDS.

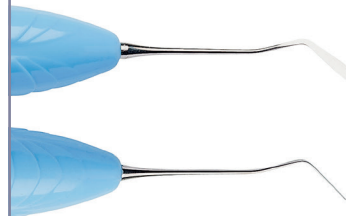


LM-Arte™ Applica Twist

- LMErgoSense®** LM 464-494 ES
- LMErgoSense®** LM 464-494 EST
- LMErgoMax™** LM 464-494 XSI

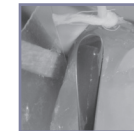


- Thin and narrow spatula with bended angles for modeling difficult to reach areas such as approximal walls or the marginal ridge in matrix



LM-Arte™ Modella

- LMErgoSense®** LM 422-443 ES
- LMErgoSense®** LM 442-443 EST
- LMErgoMax™** LM 442-443 XSI



- A very thin and flexible spatula for transporting and modeling of the composite



LM-Arte™ Condensa

- LMErgoSense®** LM 488-489 ES
- LMErgoSense®** LM 488-489 EST
- LMErgoMax™** LM 488-489 XSI

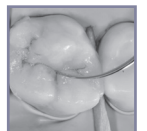


- A long and round plugger especially for modeling composite



LM-Arte™ Fissura

- LMErgoSense®** LM 481-487 ES
- LMErgoSense®** LM 481-487 EST
- LMErgoMax™** LM 481-487 XSI

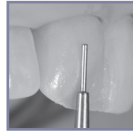


- Sharp pointed tips for modeling of occlusal surface structures



LM-Arte™ Misura

- LMErgoSense®** LM 496-497 ES
- LMErgoSense®** LM 496-497 EST
- LMErgoMax™** LM 496-497 XSI

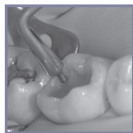


- For horizontal and vertical measuring of thickness of composite layers on the restorations



LM-Arte™ Posterior Misura

- LMErgoSense®** LM 498-499 ES
- LMErgoSense®** LM 498-499 EST
- LMErgoMax™** LM 498-499 XSI



- For horizontal and vertical measuring of thickness of composite layers on the posterior restorations
- The fork shaped tip allows measuring and modeling of the composite wall with the presence of a matrix



LM-Arte™ Cusp Misura

- LMErgoSense®** LM 468-469 ES
- LMErgoSense®** LM 468-469 EST
- LMErgoMax™** LM 468-469 XSI

- Unique instrument for estimating cusp thickness and height for evaluating the need for cusp preparation when performing adhesive restorations.



LM-Arte™ Eccesso

- LMErgoSense®** LM 307-308 ES
- LMErgoSense®** LM 307-308 EST
- LMErgoMax™** LM 307-308 XSI



- For the removal of composite and bonding residue

LM-ARTE™ SOLO



NEW

LM-Arte™ Solo instruments are ideal for simplifying your daily cases: with just two instruments, you can perform most of your high-end anterior and posterior restorations.

Read more at www.lm-dental.com/LM-Arte



LM-Arte™ Solo Anterior

- LMErgoSense®** LM 431-433 ES
- LMErgoSense®** LM 431-433 EST
- LMErgoMax™** LM 431-433 XSI

- For high-end esthetic anterior restorations
- Rounded and straight spatulas are designed for modeling anterior teeth, especially labial surfaces



LM-Arte™ Solo Posterior

- LMErgoSense®** LM 434-438 ES
- LMErgoSense®** LM 434-438 EST
- LMErgoMax™** LM 434-438 XSI

- For high-end posterior composite restorations
- The plugger end is designed for bulk filling and composite material modeling
- The sharp end enables contouring of the occlusal surface anatomy

LMArte™

LM-ARTE™ INSTRUMENT SETS



LM-Arte™ Set

- LMErgoSense®** LM 6840 ES
- LMErgoMax™** LM 6840 XSI

Includes:
LM-Arte™ Eccesso, LM-Arte™ Misura,
LM-Arte™ Fissura, LM-Arte™ Applica,
LM-Arte™ Condensa, LM-Servo™ 5
cassette

LM-Arte™ Posterior Set



- LMErgoSense®** LM 6844 ES
- LMErgoMax™** LM 6844 XSI

Includes:
LM-Arte™ Posterior Misura, LM-Arte™ Cusp
Misura, LM-Arte™ Fissura, LM-Arte™ Modella,
LM-Arte™ Condensa, LM-Servo™ 5 cassette

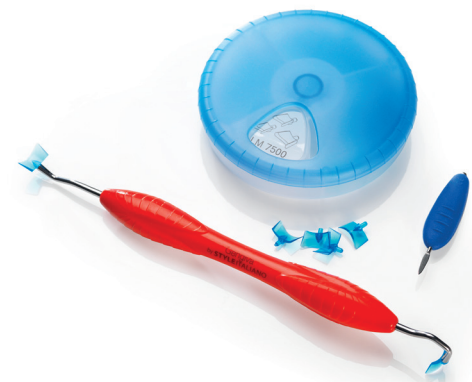
LM-Arte™ Complete Set



- LMErgoSense®** LM 6848 ES
- LMErgoMax™** LM 6848 XSI

Includes:
LM-Arte™ Eccesso, LM-Arte™ Misura, LM-Arte™ Applica,
LM-Arte™ Posterior Misura, LM-Arte™ Cusp Misura, LM-
Arte™ Fissura, LM-Arte™ Modella, LM-Arte™ Condensa,
LM-Servo™ 8 cassette

LM-GENGIVA™



LM-Gengiva™ gingival retracting kit

- LMErgoSense®** LM 7556K ES
- LMErgoMax™** LM 7556K XSI

Includes:

- LM-Gengiva™ / LM-MultiHolder™ PK III hand instrument (see more on page 46)
- LM-Gingival Retractors (blue) for establishing optimum working conditions for procedures at the gum line. Assortment package of three sizes include circa 90 pieces, 30 pcs/size: S for incisors, M for premolars and XL for molars
- LM-MultiLever™ for the removal of disposable gingival retractors

LM-MULTIHOLDER™ SYSTEM



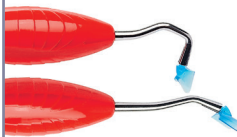
LM-MultiHolder™ PK I

- LMErgoSense® LM 750-756 ES
- ◀ LM 750-756 EST
- LMErgoMax™ LM 750-756 XSI
- LMErgoNorm™ LM 750-756 SI



LM-MultiHolder™ PK II

- LMErgoSense® LM 752-754 ES
- ◀ LM 752-754 EST
- LMErgoMax™ LM 752-754 XSI
- LMErgoNorm™ LM 752-754 SI



LM-MultiHolder™ PK III

- LMErgoSense® LM 752-756 ES
- ◀ LM 752-756 EST
- LMErgoMax™ LM 752-756 XSI

- Part of the LM-Gengiva™ gingival retracting kit, see page 45

LM-MultiHolder™ instruments and different kinds of replaceable plastic working ends – a real multi-function instrument!

Angle options allow for easy access to even the more complex areas. Optimal combination of steel and plastic: the steel shank is rigid and only the working end will flex, when required



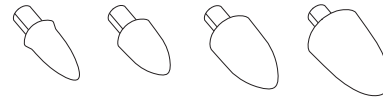
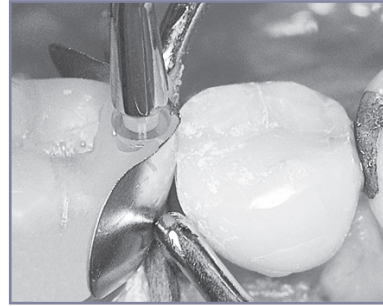
LM-MultiHolder™ IntroKit

IntroKit contains LM-MultiHolder™ instruments PK I and PK II (XSI or ES), LM-MultiLever™ and samples of all available working ends.

There are a total of 44 working ends, 4 for each size of each working end.

- LM 7555K ES
- LM 7555K XSI

You may order LM-MultiHolder™ IntroKit sample package also separately: LM 7555



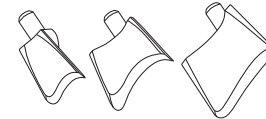
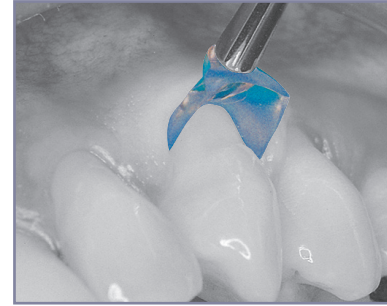
LM-Contact Formers

Transparent tip for making correctly formed and tight approximal contact.

- Suitable for use with all matrices
- Will not stick to composite fillings
- Disposable

Four sizes corresponding to the size of the cavity, circa 60 pcs / package

| | |
|---------|---|
| LM 7622 | XS |
| LM 7624 | S |
| LM 7626 | M |
| LM 7628 | L |
| LM 7620 | Assortment package ca 120 pcs (30 pcs / size) |



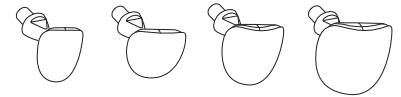
LM-Gingival Retractors (blue)

For establishing optimum working conditions for procedures at the gum line.

- Disposable

Three sizes, circa 60 pcs / package

| | |
|---------|---|
| LM 7502 | S for incisors |
| LM 7504 | M for premolars |
| LM 7506 | XL for molars |
| LM 7500 | Assortment package circa 90 pcs (30 pcs / size) |



LM-Cervical Matrices

For making anatomically correct fillings at the gum line.

- Protects from moisture
- Prevents air bubbles
- Disposable

Four models for different size and shape, circa 60 pcs / package

| | |
|---------|--|
| LM 7602 | for incisors |
| LM 7604 | for canines and premolars |
| LM 7606 | for small molars |
| LM 7608 | for large molars |
| LM 7600 | Assortment package circa 120 pcs (30 pcs / size) |



LM-MultiLever™

LM 7550

- For the removal of plastic working end



LM DARK DIAMOND™ NON-STICK COATED INSTRUMENTS



LM Dark Diamond™ instruments with non-stick coating for easy placing and contouring of composite resins. The diamond like coating reduces the stickiness and allows pleasant and precise restorative instrumentation.

LM Dark Diamond™ features:

- Exclusive diamond like coating
- Hard surface
- Smooth surface
- Dark color coating
- LM-ErgoSense® handle

Benefits:

- Non-stick placement and sculpting of the composite resin
- Not sensitive to scratches
- Easy to clean
- Maximum contrast against the filling & minimal reflections
- Extreme precision and feel

LM Dark Diamond™ instruments can be cleaned and sterilized similarly to all other LM™ instruments.

LM Dark Diamond™ coating makes the surface of the tip extremely smooth and hard and allows for non-stick application and modeling of composite.



Burnisher

LM-ErgoSense® LM 31-32DD ES

LM 31-32DD EST

- LM Dark Diamond™ non-stick coating
- For packing and modeling composite



Burnisher - Plugger,
ball-ended, 1.5-2.5 mm

LMErgoSense® LM 471-473DD ES

⌋ LM 471-473DD ES

- LM Dark Diamond™ non-stick coating
- For modeling composite



Modeller MH

LMErgoSense® LM 708-709DD ES

⌋ LM 708-709DD ES

- LM Dark Diamond™ non-stick coating
- For packing large approximal fillings
- Cylinder shaped working end will not get stuck into the composite while light curing



Modeller MH Mini

LMErgoSense® LM 707-708DD ES

⌋ LM 707-708DD EST

- LM Dark Diamond™ non-stick coating
- For packing small and medium approximal fillings
- Cylinder shaped working end will not get stuck into the composite while light curing



Packer-Modeller IO

LMErgoSense® LM 482-483DD ES

⌋ LM 482-483DD EST

- LM Dark Diamond™ non-stick coating
- For packing and modeling composite
- Conical working ends optimal for shaping occlusal surfaces



Plastic instrument, anterior

LMErgoSense® LM 43-47DD ES

⌋ LM 43-47DD EST

- LM Dark Diamond™ non-stick coating
- For placing, packing and contouring composite



Plastic instrument, posterior

LMErgoSense® LM 48-702DD ES

⌋ LM 48-702DD EST

- LM Dark Diamond™ non-stick coating
- For placing, packing and contouring composite



Mini Spatula

LMErgoSense® LM 444-445DD ES

⌋ LM 444-445DD EST

- LM Dark Diamond™ non-stick coating
- For placing and contouring composite



Handle options:



LMErgoSense®



LMErgoMax™



LMErgoNorm™

FOR COMPOSITES



Flow Instrument IO

- LMErgoSense®** LM 484-485 ES
- LMErgoSense®** LM 484-485 EST
- LMErgoMax™** LM 484-485 XSI
- For easy handling and shaping of flowable composites



Modeller MH

- LMErgoSense®** LM 708-709 ES
- LMErgoSense®** LM 708-709 EST
- LMErgoMax™** LM 708-709 XSI
- For packing large, approximal fillings in several layers
- Cylinder shaped working ends won't get stuck into the composite while light curing
- For pressing the matrix band in place while curing



Modeller MH Mini

- LMErgoSense®** LM 707-708 ES
- LMErgoSense®** LM 707-708 EST
- LMErgoMax™** LM 707-708 XSI
- For packing small or medium approximal fillings in several layers
- Cylinder shaped working ends won't get stuck into the composite while light curing
- For pressing the matrix band in place while curing



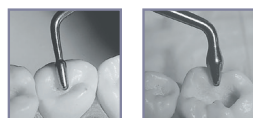
Packer-Modeller IO p

- LMErgoSense®** LM 482-702 ES
- LMErgoSense®** LM 482-702 EST
- LMErgoMax™** LM 482-702 XSI
- LMErgoNorm™** LM 482-702 SI
- Combination instrument for premolars



Packer-Modeller IO

- LMErgoSense®** LM 482-483 ES
- LMErgoSense®** LM 482-483 EST
- LMErgoMax™** LM 482-483 XSI
- LMErgoNorm™** LM 482-483 SI
- Conical working ends, which are exceptionally well-suited e.g. to shaping of occlusal surfaces and to packing of all kinds of plastics
- Composites do not stick to the highly polished blades



Packer-Modeller IO m

- LMErgoSense®** LM 483-703 ES
- LMErgoSense®** LM 483-703 EST
- LMErgoMax™** LM 483-703 XSI
- LMErgoNorm™** LM 483-703 SI
- Combination instrument for molars



Plastic Instrument, anterior

- LMErgoSense®** LM 43-47 ES
- LMErgoSense®** LM 43-47 EST
- LMErgoMax™** LM 43-47 XSI
- LMErgoNorm™** LM 43-47 SI
- For placing, packing and contouring composite



Plastic Instrument, posterior

- LMErgoSense®** LM 48-702 ES
- LMErgoSense®** LM 48-702 EST
- LMErgoMax™** LM 48-702 XSI
- LMErgoNorm™** LM 48-702 SI
- For placing, packing and contouring composite



Form Condenser, 1.5-2.5 mm

- LMErgoSense®** LM 702-703 ES
- LMErgoSense®** LM 702-703 EST
- LMErgoMax™** LM 702-703 XSI
- LMErgoNorm™** LM 702-703 SI
- For shaping and packing of large filling surfaces



Composite Spatula 6

- LMErgoSense®** LM 446-447 ES
- LMErgoSense®** LM 446-447 EST
- LMErgoMax™** LM 446-447 XSI
- LMErgoNorm™** LM 446-447 SI
- For placing and contouring composite



Mini Spatula

- LMErgoSense®** LM 444-445 ES
- LMErgoSense®** LM 444-445 EST
- LMErgoMax™** LM 444-445 XSI
- LMErgoNorm™** LM 444-445 SI
- For placing and contouring composite

CARVERS



For shaping of filling material to fit the anatomy of tooth, and for removal of soft excess.



1/2 Hollenback

- LMErgoSense®** LM 741-751 ES
- LMErgoSense®** LM 741-751 EST
- LMErgoMax™** LM 741-751 XSI
- LMErgoNorm™** LM 741-751 SI
- For proximal and cervical surfaces



Nystrom I

- LMErgoSense®** LM 74-75 ES
- LMErgoSense®** LM 74-75 EST
- LMErgoMax™** LM 74-75 XSI
- LMErgoNorm™** LM 74-75 SI
- For proximal and occlusal surfaces



Nystrom III

- LMErgoSense®** LM 76-77 ES
- LMErgoSense®** LM 76-77 EST
- LMErgoMax™** LM 76-77 XSI
- LMErgoNorm™** LM 76-77 SI
- For interdental spaces, contact surfaces



Maehlum

- LMErgoSense®** LM 71-73 ES
- ☾** LM 71-73 EST
- LMErgoMax™** LM 71-73 XSI
- LMErgoNorm™** LM 71-73 SI
- For removal of soft excess from gingival margins (71)
- For anatomical shaping of occlusal surfaces (73)



Universal Carver, occlusal-proximal

- LMErgoSense®** LM 71-72 ES
- ☾** LM 71-72 EST
- LMErgoMax™** LM 71-72 XSI
- LMErgoNorm™** LM 71-72 SI
- For removal of soft excess from gingival margins (71)
- For anatomical shaping of occlusal surfaces (72)



Cleoid-Discoid

- LMErgoSense®** LM 731-732 ES
- ☾** LM 731-732 EST
- LMErgoMax™** LM 731-732 XSI
- LMErgoNorm™** LM 731-732 SI
- For anatomical shaping of occlusal surfaces of small fillings

EXCESS SCALERS



Excess Scaler

- LMErgoSense®** LM 785-795 ES
- ☾** LM 785-795 EST
- LMErgoMax™** LM 785-795 XSI
- LMErgoNorm™** LM 785-795 SI
- For the removal of adhesive, cement, and composite excesses



Mini Excess Scaler

- LMErgoSense®** LM 784-794 ES
- ☾** LM 784-794 EST
- LMErgoMax™** LM 784-794 XSI
- LMErgoNorm™** LM 784-794 SI
- An effective excess remover in extremely tight interdental spaces

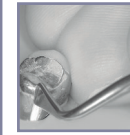
FILLING REMOVER



Filling Remover

- LMErgoSense®** LM 764-766 ES
- ☾** LM 764-766 EST
- LMErgoMax™** LM 764-766 XSI
- LMErgoNorm™** LM 764-766 SI
- For the removal of temporary fillings and crowns
- For bridge removal during fitting

CROWN OFF



A groove is first burred from the lower edge of the crown up to the occlusal surface. The groove should be so deep that it reaches the cement. The Crown Off working end is placed longitudinally into the groove and turned as if spreading the groove. The blade is turned until the crown loosens and lifts up. The blade stays firmly in the groove and it is easy to control even when lot of force is used.



Crown Off

- LMErgoSense®** LM 767-768 ES
- ☾** LM 767-768 EST
- LMErgoMax™** LM 767-768 XSI

- Blade double angled with a 45° twist
- Crown removal instrument

INSTRUMENT SET



LM-CompoSet

- LMErgoSense®** LM 6657 ES
- LMErgoMax™** LM 6657 XSI

- Includes:
- LM-Servo™ 5 cassette, Mini Spatula, Plastic instrument, ant., Form Condenser, Packer-Modeller IO, Mini Excess Scaler