

## Locapex 6 | the new apex locator

- + ergonomic
- + compact
- + legible

3-YEARS  
WARRANTY

### ARE YOU LOOKING FOR A CUTTING EDGE DEVICE THAT IS BOTH COMFORTABLE AND SIMPLE?

With the **Locapex 6**, the new apex locator designed by ionyx, take advantage of our latest innovation designed exclusively for your needs

#### toughness

The Locapex 6 is **a simple and robust machine**. Upgraded from the Locapex Five, it keeps the same characteristics that made the success of its predecessor.

#### autonomy

Your IONYX apex locator allows you to work safely with two standard LR03 (AAA), batteries. The autonomy **can vary from 6 months to more than 1 year** depending on your activity in endodontics. **The quality of measurement remains the same, regardless of the level of the batteries.**

#### design

A **signal filtering system** enables your Locapex 6 to eliminate false signals during the progress of your file in the canal (virtual apex). Its **more compact new design**, offers a precise view of the apical excess at the level of the foramen.

### YOUR PARTNER FOR OVER 25 YEARS

Established in 1993 and located in France in the Bordeaux region, **the company IONYX designs and manufactures specialized machines for endodontics**. Intended for general practitioners seeking to improve the quality of their treatment and their comfort, **the entire IONYX range is designed for daily and easy practice**.

**Present everywhere in the world** through its wide network of distributors, **IONYX is one of the most recognized experts in the field of dentistry**.



# Locapex 6 apex locator

## TECHNICAL CHARACTERISTICS

### a 100% digital measurement

The signal sent by your Locapex 6 is 100% digital. There is no drift or modification of the accuracy of your IONYX apex locator in time.

### the apex on the display

The apex on the display corresponds with the cementum-dentine junction. (See diagram 1 opposite)

### information of the apical excess

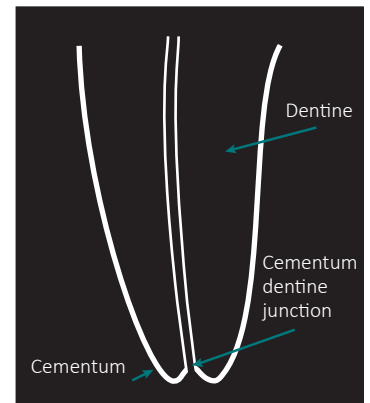
Beyond the apex, the indicator lights of the Locapex 6 will light up in red "Apex" up to 1 mm. (See diagram 2 opposite)

### an instantaneous measurement

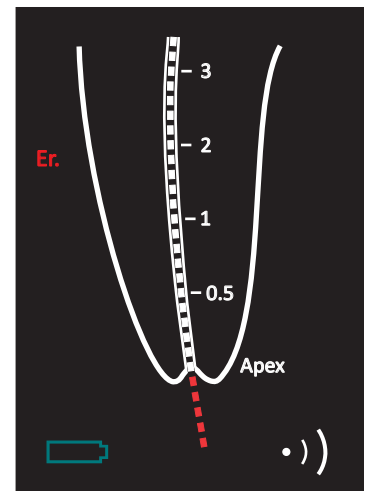
The instantaneous measurement enables you to obtain the information about the position of your file in the canal from the moment of the contact of the tip or your file grip.

### a visibility angle more than 160°

This angle allows you to view the progress of your file toward the apex, regardless of the position of your device.



1 | Cementum-dentine junction.



2 | Adjusting a stop to adapt to your needs. From « 2 » up to « Apex ».

The electronic unit of the Locapex 6 is guaranteed for 3 years.  
The accessories are guaranteed for 2 years and compatible with the Locapex Five.

Learn about the other products in our **ionyx** range



**Endy NT2**  
micromotor  
with integrated light

**Endy 7**  
the new  
micromotor  
with apex locator



A REAL PROGRESS IN ENDODONTIC PRACTICE

ionyx

5 rue du Vergne, F-33300 BORDEAUX

T. +33 5 56 35 34 27 / WhatsApp +33 7 66 45 50 71

ionyx@ionyx.eu

www.ionyx.eu

Follow our news live:

